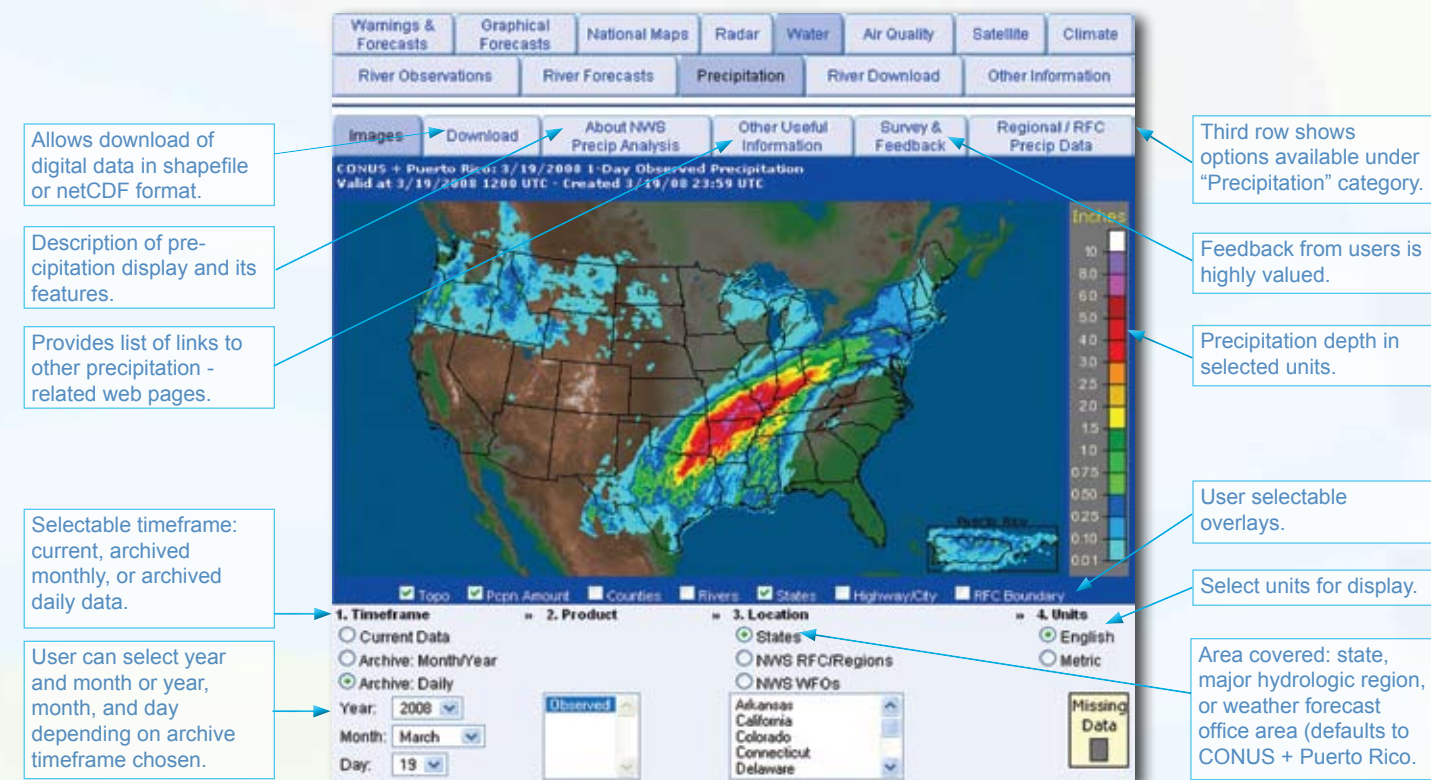


Precipitation

This web page shows the digital precipitation estimates used in National Weather Service river forecast models.



Interactive Snow Information

This web page (www.nohrsc.nws.gov/interactive/) provides an interface to remotely sensed snow information.



NOAA/PA 200850

NOAA'S NATIONAL WEATHER SERVICE

Guide to Hydrologic Information on the Web



Colorado River at Lees Ferry

Photo: courtesy Tim Helble

Your gateway to web resources provided through NOAA's Advanced Hydrologic Prediction Service begins here:

<http://water.weather.gov>

To access the water information in this brochure, see:

<http://water.weather.gov>

Feedback on these web pages is welcome at:

www.weather.gov/feedback.php

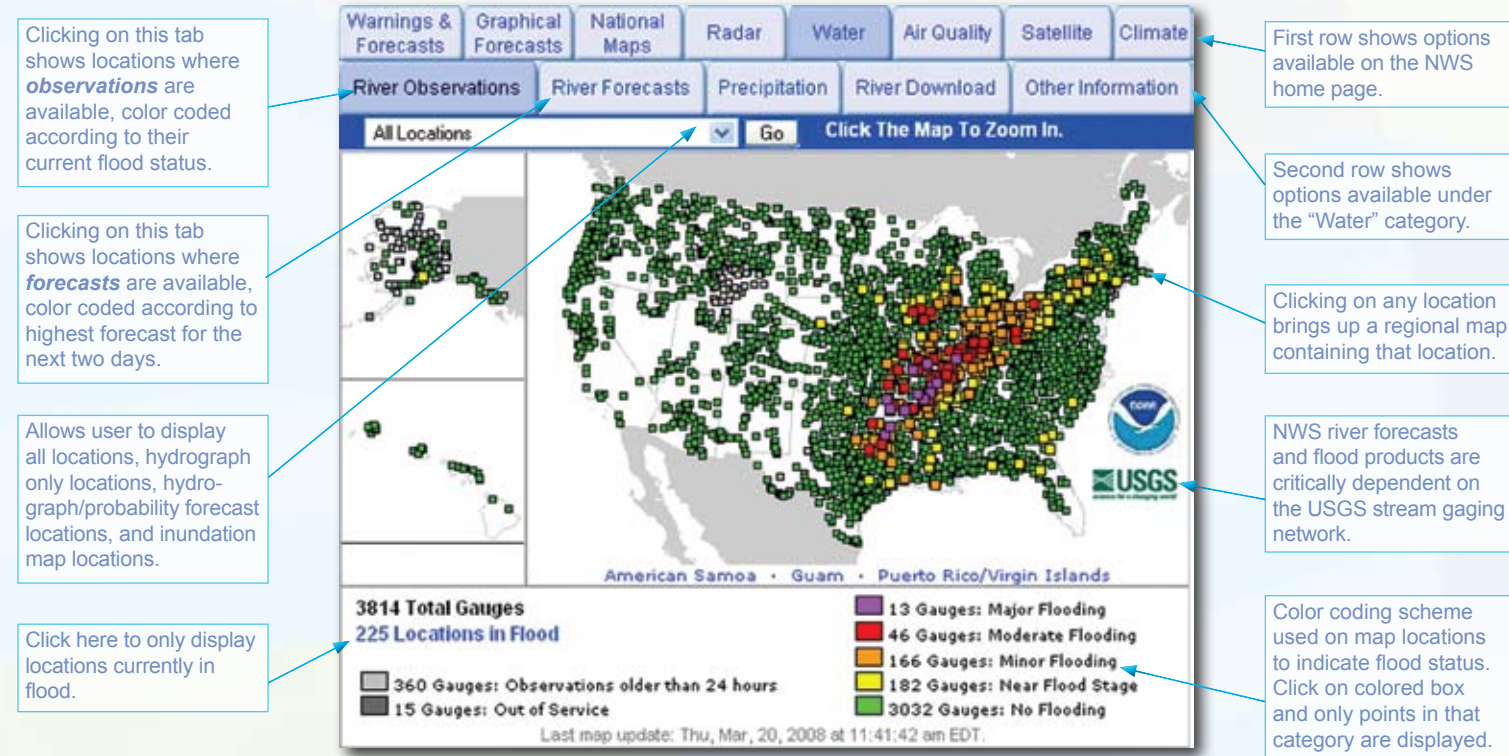
U.S. DEPARTMENT OF COMMERCE
National Oceanic and Atmospheric Administration
National Weather Service
July 2008

NOAA/PA 200850



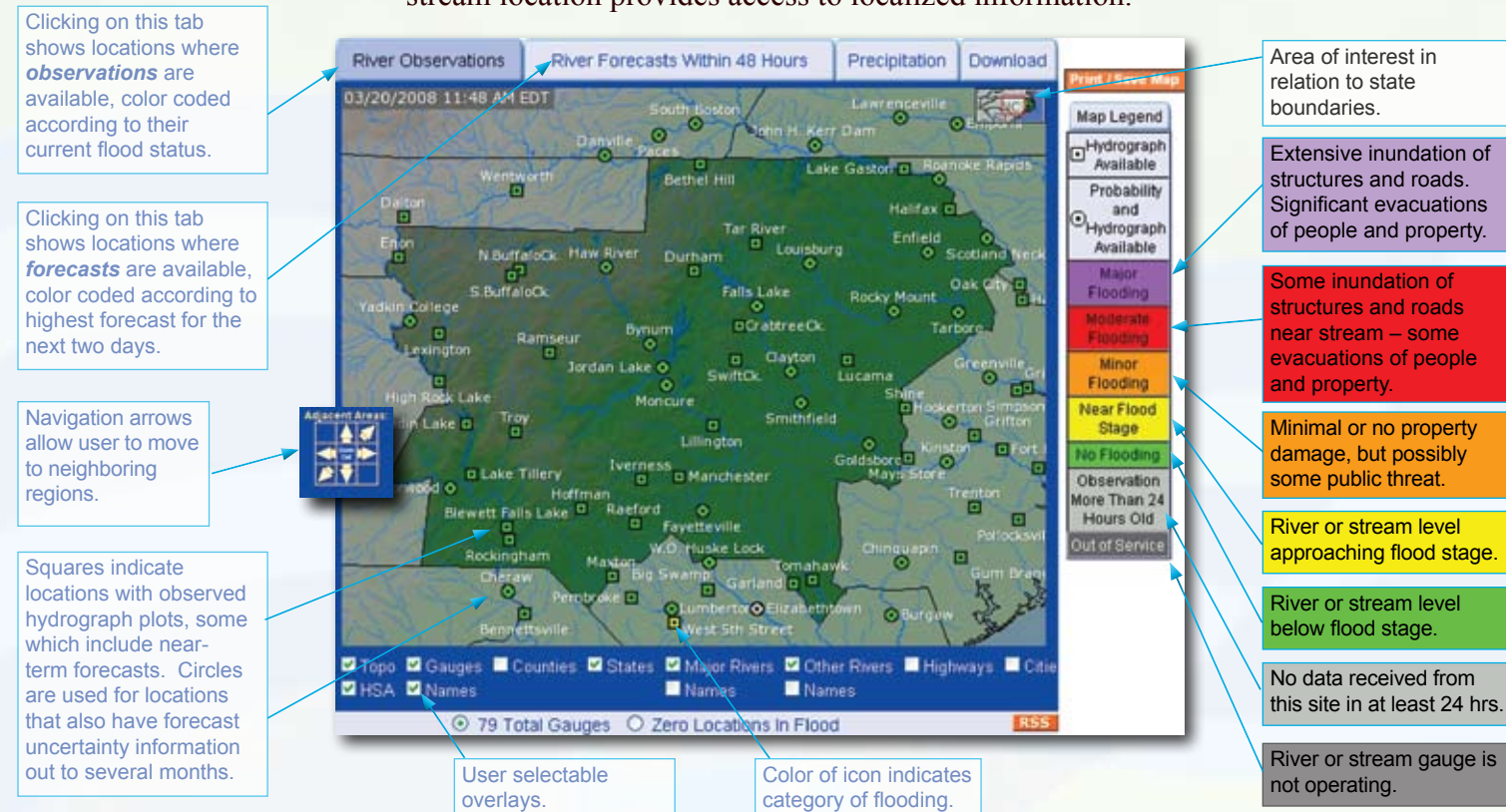
National Map

This web page shows the flood status at all National Weather Service river forecast locations.



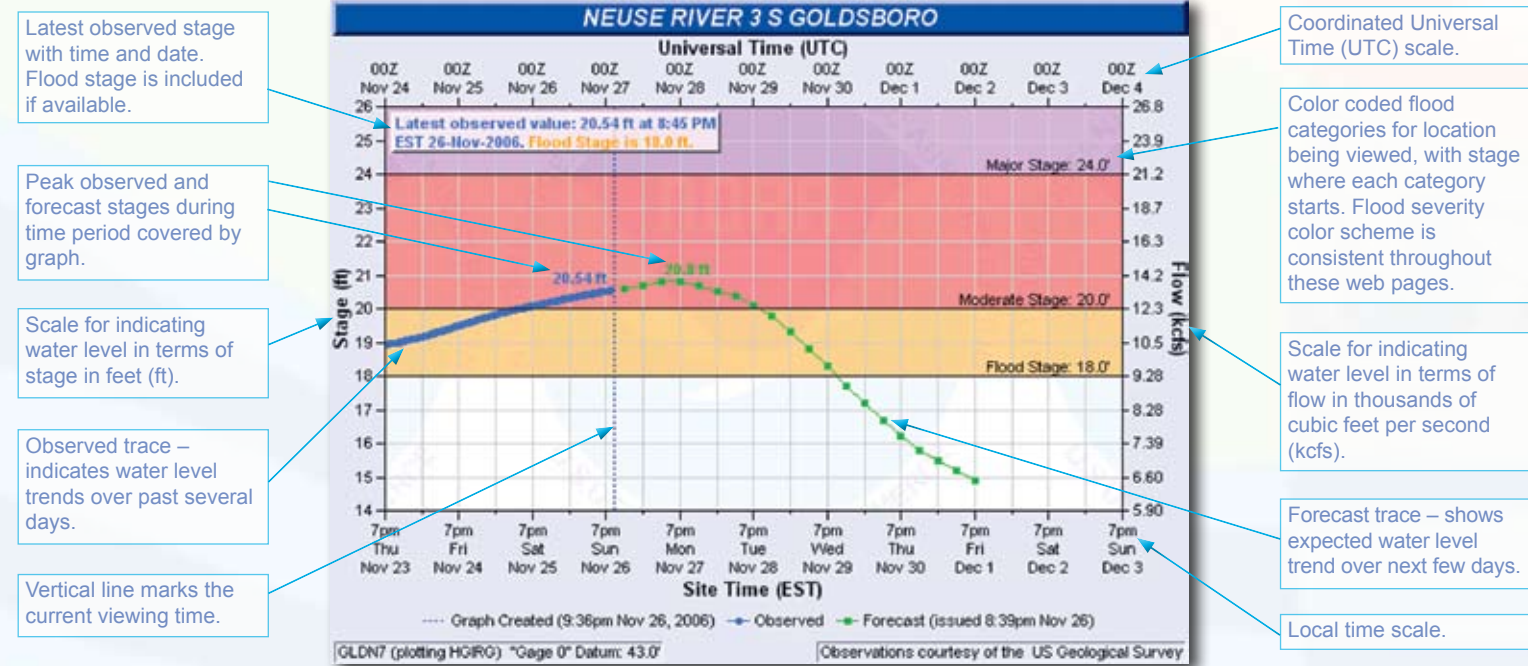
Regional Map

This web page shows the flood status of river forecast locations in the selected region. Selecting a specific river/stream location provides access to localized information.



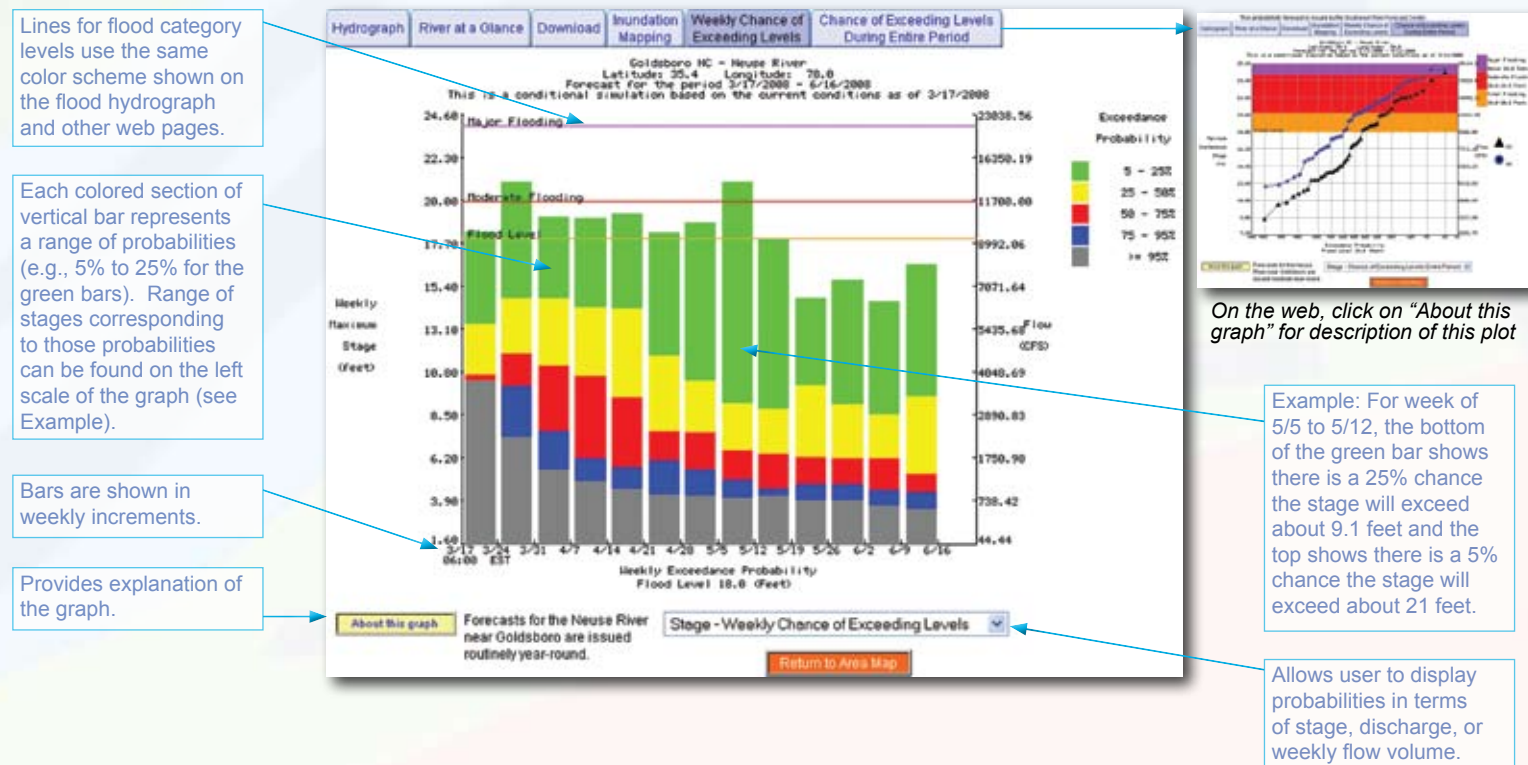
Hydrograph

The hydrograph is the first graphic displayed after clicking on a specific river/stream location on the regional map. It provides recent observations and for many points a forecast for the next few days. Tabs at the top of the hydrograph allow a user to display other graphical information for the river/stream location.



Weekly Chance of Exceeding Levels

This graphic provides the probability of exceeding various river/stream levels during the next three months given the weather patterns in past years and the best available long-term forecasts.



Flood Inundation Map

This interactive web page shows the spatial extent of possible or expected flooding in a given area. It can be used to show if roadways and structures will be impacted by floodwaters. At the limited number of forecast locations where inundation maps are currently available, this web page is accessed by clicking on the inundation mapping tab on the hydrograph web page. In collaboration with partners, this product will be expanded to new locations.

