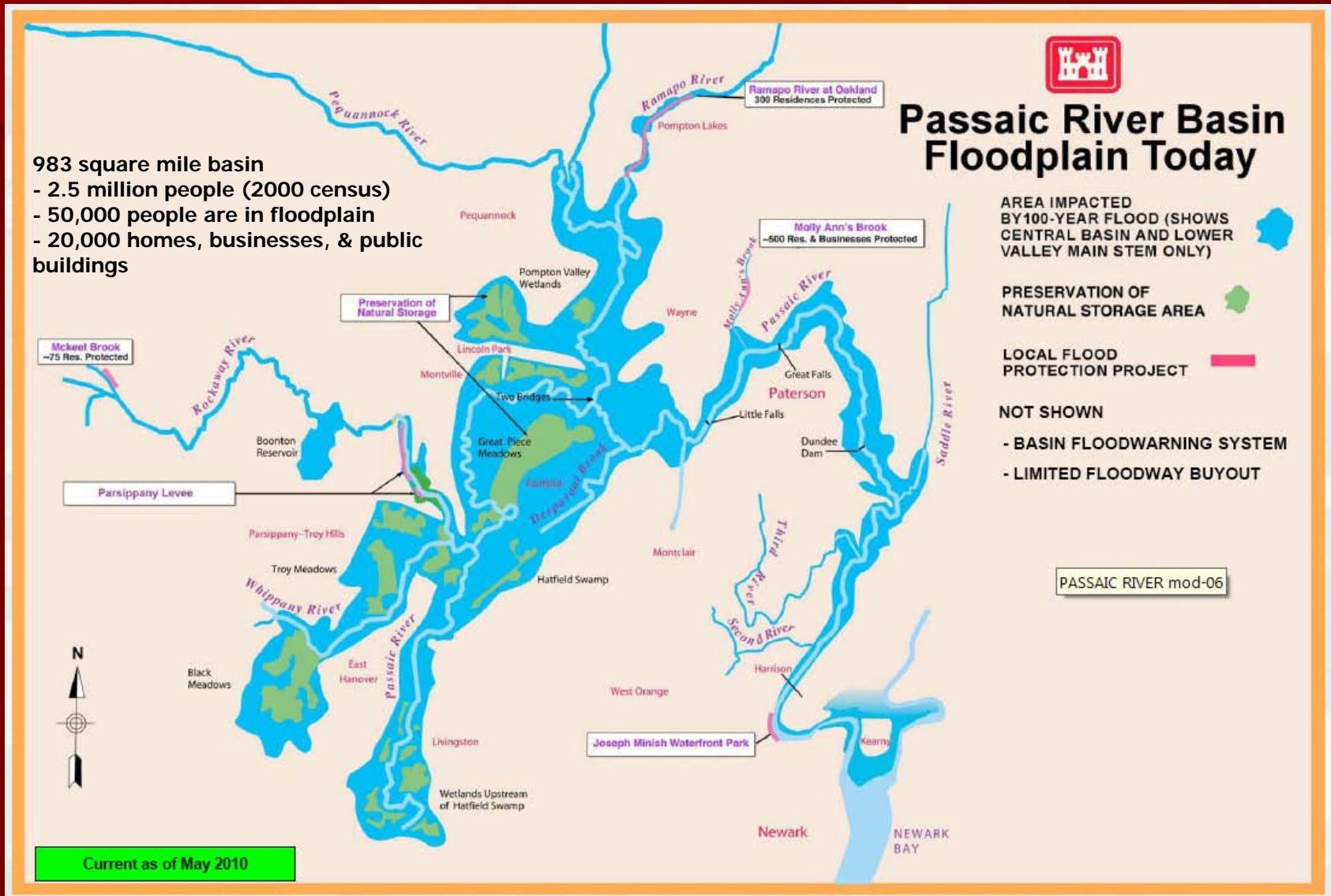


The Township of Fairfield

Flood Remediation Meeting



Passaic River Basin Flooding Impacts 132 Communities



The Timing Impact in Fairfield



Bloomfield Ave – before then after

The Town that Shut Down,
as signs were located on Rt.
46 to avoid area due to
flooding.

Town is impacted 24 to 36
hrs after upstream areas
have crested making the
town almost impassable.
Roads become shut down
for days.



The Business & Services Impact

Area retailers and industrial sites were forced to shut down, along with postal service.



The Neighborhood Impact in Fairfield



Streets and Homes



Roadways became Waterways



From the Rivers edge to 1 ½ miles Away



Impact on Town Systems

- Sewer System was compromised
- Well Water was compromised
- Main highway, Rt. 46, along with County roads shut down.
- Schools were closed

Passaic Main Stem vs. Tributaries

The Passaic River is the Main Stem to carry water out of area to Newark Bay, being fed by:

- Ramapo
- Wanaque
- Pequannock
- Pompton
- Rockaway
- Whippany
- Saddle

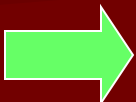
Passaic River at Two Bridges is critical junction.



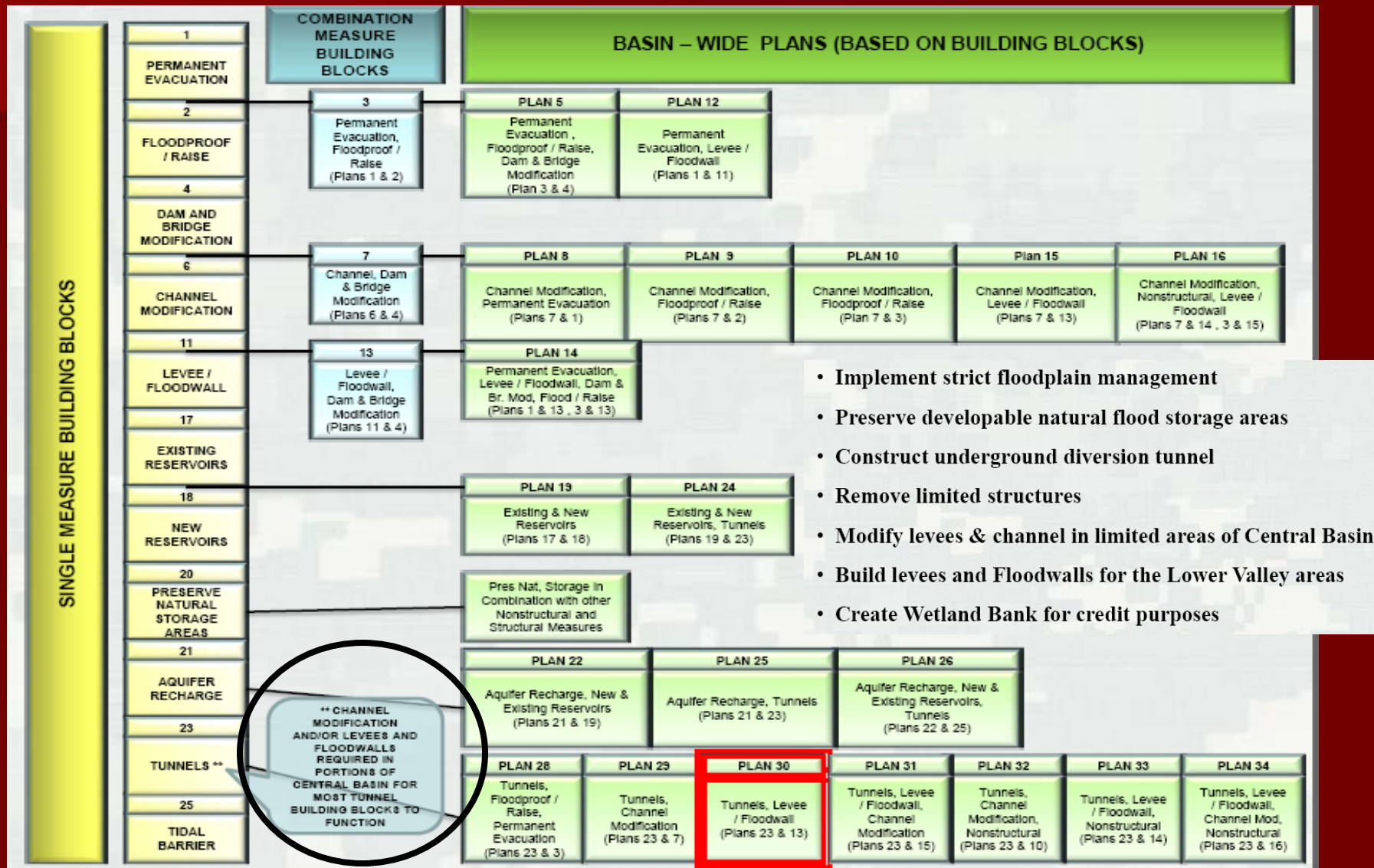
Public Interest & Spending

- Upstream projects such as Oakland Dam, and Downstream dredging projects for Commercial interests.
 - The Central basin is considered the "natural retention basin" and the "most impacted" .
 - Why is it being ignored?
 - Where are similar projects for this region?

Passaic River Basin – Options from US Army Corps Engineers

- 
1. Implement a comprehensive basin wide flood risk management plan and gain benefits
 2. Implement smaller local plans accruing limited benefits
 3. No action -potential flood damages with continued risk to life and additional economic and environmental losses

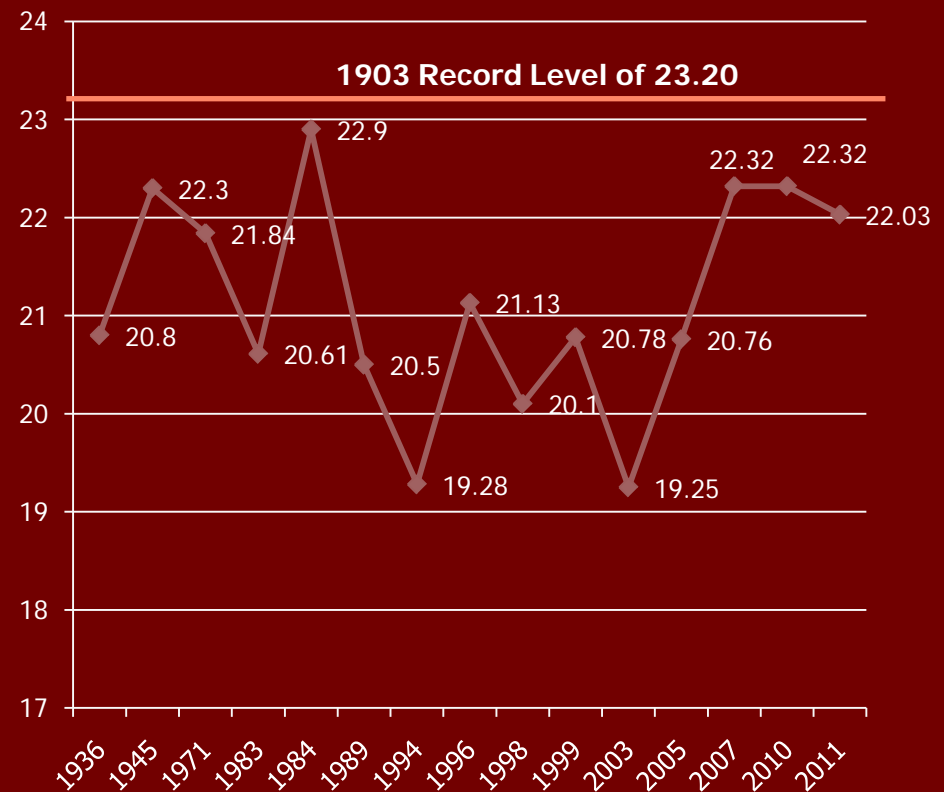
Passaic River Basin Main Stem Plan - NJDEP Selected Plan (30E) in 1984 Congress Authorized Plan in 1990



Local Knowledge & History

- Flooding in the area has increased in occurrence with less severe storms.
- Flood water impact & location is not directly linked to river height, as new areas are now being affected.
- Water is coming into neighborhoods from new directions, and in areas that are 1 to 2 miles from the river through storm drains/ditches.
- Flooding has the most impact 24 to 36 hours after tributaries have crested. This "second wave" of creeping water is the cause for increased flood water impact and scope on region.
- It has been observed that the Passaic river flow is significantly reduced, if not reversed, at the Two Bridges junction with the Pompton river. This area is critical for flood water management in Fairfield, as well as impact to surrounding communities.

River Crests of Passaic River at Pine Brook



Pompton & Passaic River Flow at Two Bridges

VIDEO_TS.IFO

Short & Long Term Suggestions

- **Implement the Army Corps master plan to address the flooding issue in entire Passaic river Basin as developed for long term, final solution that will address 100 yr flood conditions, and reduce impact of greater floods.**
- Build a flow diversion structure/jetty at Two Bridges to redirect Pompton and allow Passaic to flow, with assistance from the Pompton.
- Begin channelization of Main Stem Passaic to increase flow and capacity.
- Install flood gates on Beatties dam to allow for flow management.
- Lock the Oakland flood gates in a set position, preventing opening, thus allowing natural gravity spill over, and eliminating down stream impact.
- Stop immediately all building in flood areas as identified in committee report.
- Implement an OEM group to allow regional area human beings vs. computers to manage the reservoirs and dam as a preventive flood tool, similar to recent Delaware river action by DEP.
- **TAKE ACTION – ELIMINATE THE RISKS TO LIFE & ENVIRONMENT!!!**

